

JTMA-400 5-Axis High-Speed Machine

Product descriptions and features

■ Features

- Fully closed loop control technology makes machine machining more accurate and reliable.
- High-accuracy, high-speed and high-efficiency machining.
- Excellent human-machine interaction design ensures the operational comfort and convenience for operator.
- Gantry structure makes machine dynamic property and precision retention better.
- Equip with DD direct drive 5-axis rotary tables.
- The moving components are completely isolated from the machining area that is easy for machine cleaning.
- A large torque or high-speed spindle is optional for meeting machining needs of different industries.

■ For Material

copper, aluminum, steel, stainless steel, titanium, quenched material, high polymer material, etc

■ Applied Range

accurate component parts of 5-axis simultaneous machining demand for aviation and aerospace, electric car, medical instrument, etc



KEJIE website



KEJIE wechat

Parameters

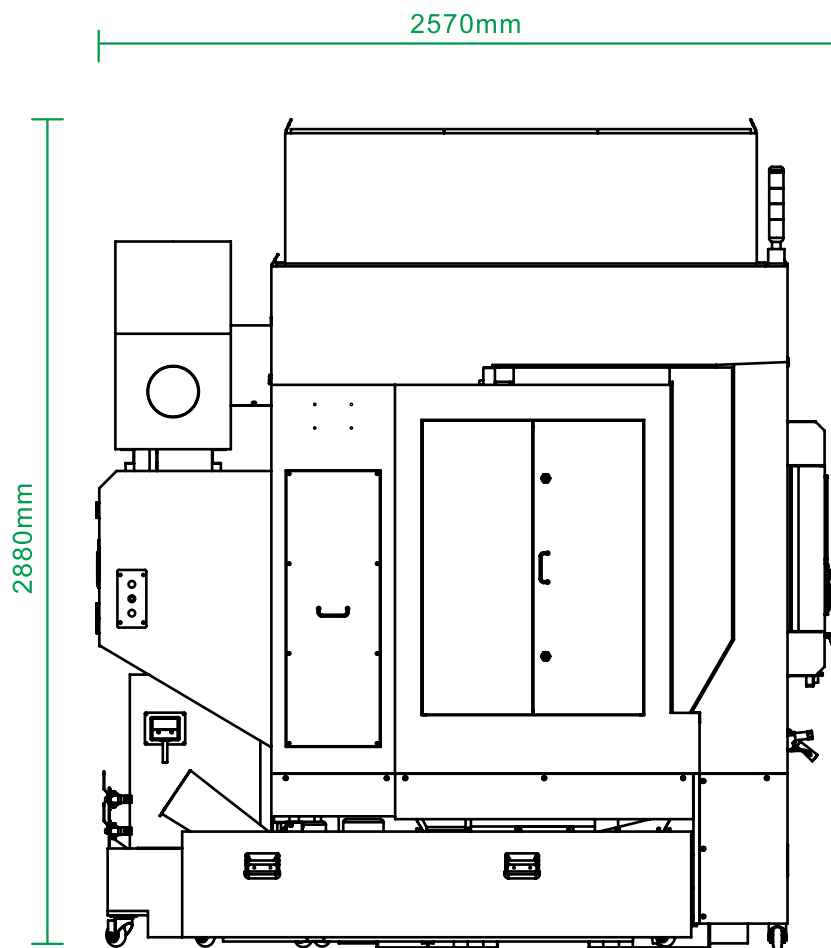
Item	Parameter
X/Y/Z travel	500×680×400 mm
A/C axis tilt angle	-120°~90°/0~360°
Work table dimension	Φ350mm
Max workpiece size	Φ500×410mm
Max load of worktable	150kg
Spindle power/Max spindle speed	19.2kW/20000rpm
Spindle interface/taper	HSK A50
Rapid traverse rate	30m/min
Cutting feed rate	15m/min
A/C axis max. speed	50rpm
Positioning accuracy	0.003mm/300mm
Repeatability	0.002mm
Machine net weight	9000kg
Machine net dimension	2570×2650×2880mm
Power supply	3-PH AC380V ±5% (50Hz)

Standard Configuration

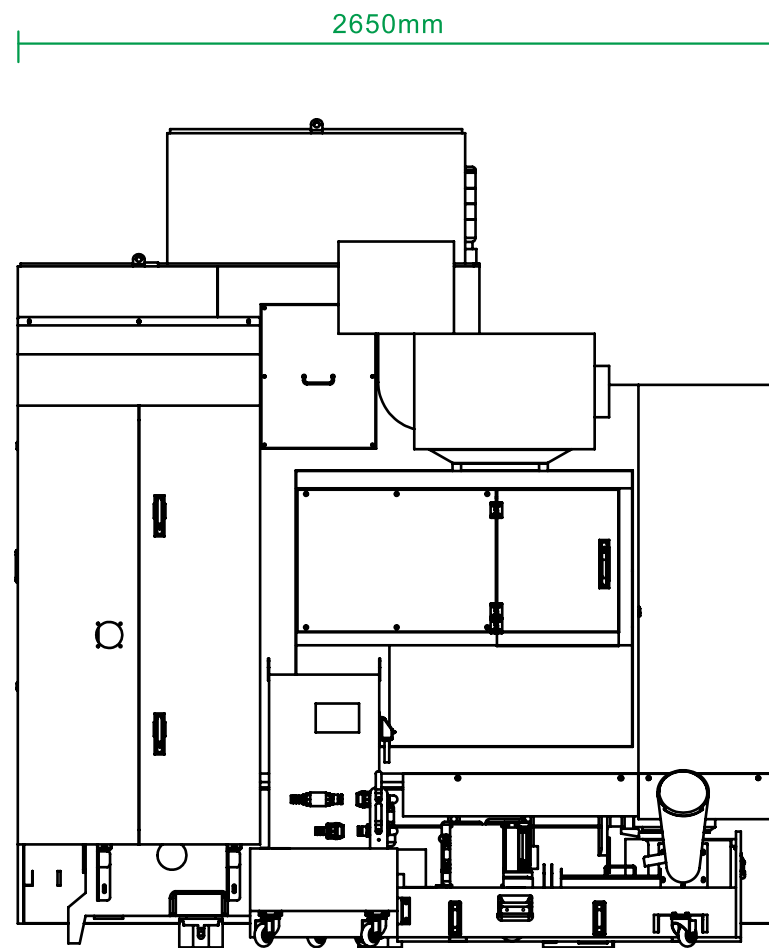
- High speed CNC controller
- High speed spindle
- AC servo motor
- Precision ball screw and guide rail
- 5-axis rotary table
- Automatic tool magazine
- Hand Wheel
- Spindle cooling system

Optional Accessories

- Automatic probe
- High speed CNC controller (JIATIE JT810)
- Automatic chip removal device
- Oil mist collector



Front



Left