



JTMA-200 5-Axis High-Speed Machine

Product descriptions and features

■ Features

- Gantry structure makes machine dynamic property and precision retention better.
- Equip with DD direct drive 5-axis rotary tables.
- The moving components are completely isolated from the machining area that is easy for machine cleaning.
- A large torque or high-speed spindle is optional for meeting machining needs of different industries .

■ For Material

copper, aluminum, steel, stainless steel, titanium, quenched material, high polymer material, etc

■ Applied Range

accurate component parts of 5-axis simultaneous machining demand for aviation and aerospace, electric car, medical instrument, etc



KEJIE website



KEJIE wechat

Parameters

Item	Parameter
X/Y/Z travel	550/240/250 (mm)
B/C axis tilt angle	±110°/360°
Work table dimension	Φ160mm
Max load of worktable	30kg
Max workpiece size	Φ220 x120mm
Spindle power/Max spindle speed	5.5kW/32000rpm
Spindle interface/taper	HSK E32
Rapid traverse rate	15m/min
Cutting feed rate	10m/min
A/C axis max. speed	50rpm/100rpm
Positioning accuracy	0.003mm/300mm
Repeatability	0.002mm
Machine net weight	4000kg
Machine net dimension	1650 x 1850 x 2180mm (Circular type tool magazine) 2110 x 1850 x 2180mm (Chain type tool magazine)
Power supply	3-PH AC380V ±5% (50Hz)

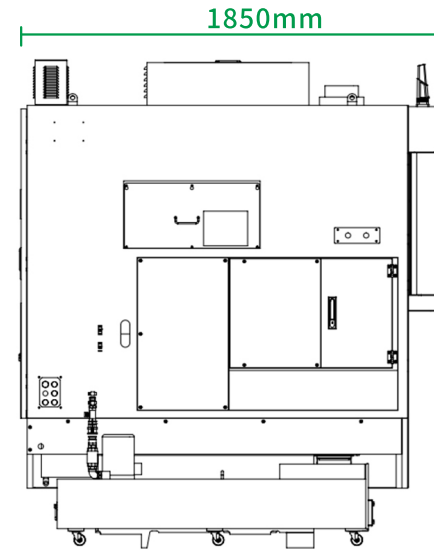
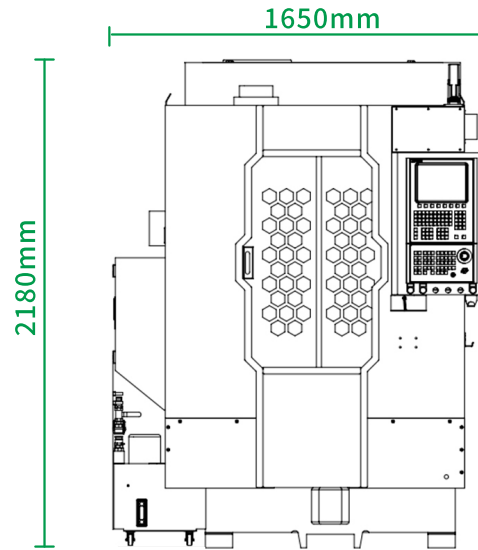
Standard Configuration

- JIATIE high speed CNC controller
- High speed spindle
- AC servo motor
- Precision ball screw and guide rail
- 5-axis rotary table
- Automatic tool magazine
- Hand Wheel
- Spindle cooling system

Optional Accessories

- NC system (Siemens ONE)
- Voltage stabilizer
- Oil mist collector
- Automatic probe

Circular type tool magazine



Chain type tool magazine

