

JTGK-1608 Long Travel Machining Center

Product descriptions and features

■ Features

- Brand new machine structure design, performance is more stable and reliable, high accuracy, fast speed and high rigidity.
- High moving speed effectively shortens the non-cutting moving time to achieve efficient machining in batch
- Box type Z axis structure, better dynamic performance.
- High-end all-in-one outer looking design, operation and management are more humanized, less floor area and humanized operation interface.
- Tool magazine is with servo tool changing system to realize fast and reliable tool changing.

■ For Material

Machining material: glass, acrylic, copper, aluminum, etc

■ Applied Range

the large-size machining demand of plate material, aviation and aerospace, automotive component, industrial equipment component, etc



KEJIE website



KEJIE wechat

Parameters

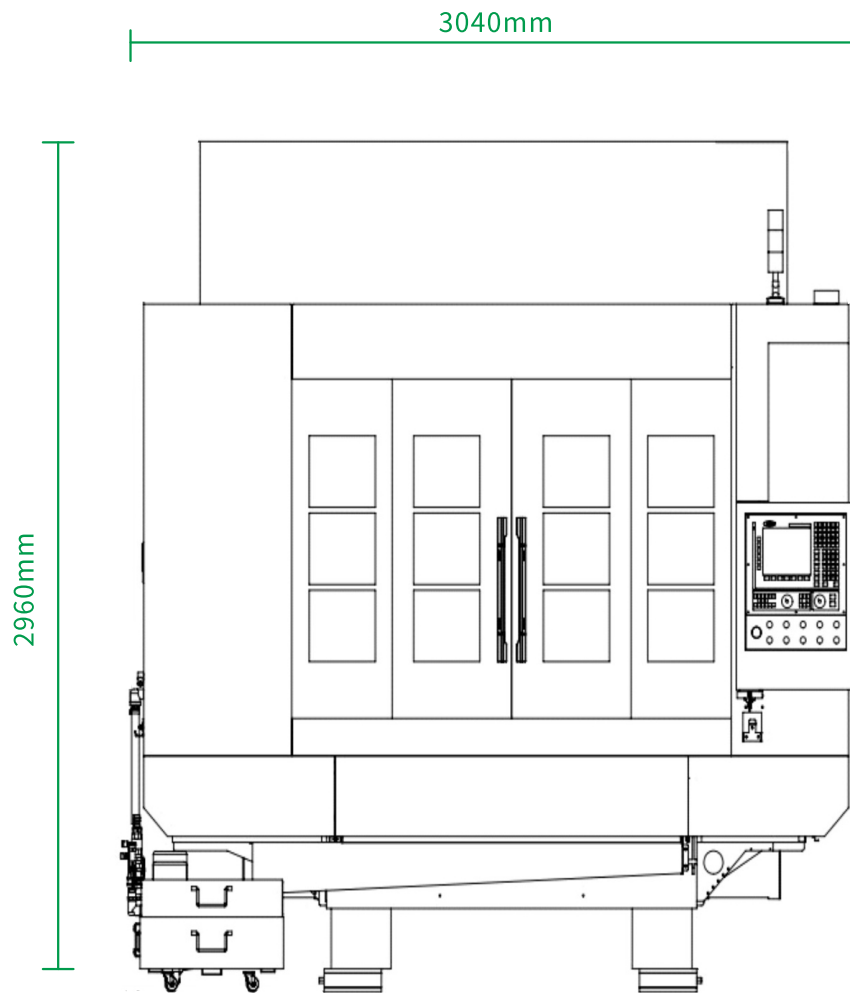
Item	Parameter
X/Y/Z travel	1600/800/500mm
Work table dimension	1600×800mm
Max load of worktable	800kg
Spindle power/Max spindle speed	7.2KW/24000rpm
Spindle interface/taper	BT30/BBT30
Rapid traverse rate	X Y:20m/min Z:10m/min
Cutting feed rate	10m/min
Positioning accuracy	0.008mm/300mm
Repeatability	0.005mm
Machine net weight	7500kg
Machine net dimension	3040×2470×2960mm
Power supply	3-PH AC380V ±5% (50Hz)

Standard Configuration

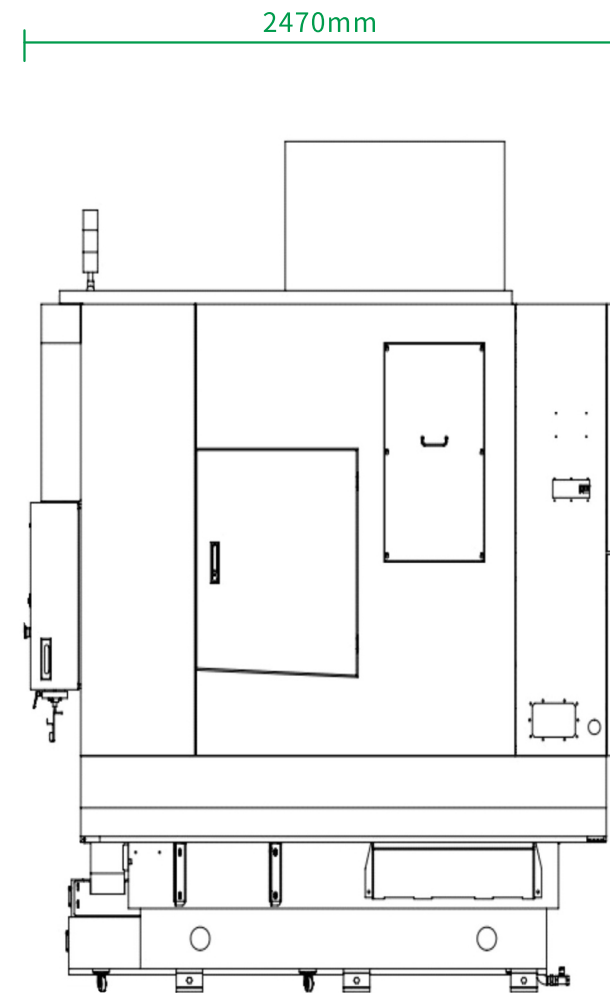
- High speed CNC controller
- High speed spindle
- AC servo motor
- Automatic tool setter
- Hand Wheel
- Spindle cooling system

Optional Accessories

- Voltage stabilizer
- Oil mist collector
- 4-axis rotary table



Front



Left