

JTDC-800R Multiple-Station Customized Machine

Product descriptions and features

■ Features

- Double stations can proceed processing at the same, the double -channel structure can realize the adjustment and compensation of X/Y/Z size individually, high speed and high efficiency
- The worktable is made of alloy aluminum to avoid rust problem
- High precision, high speed and efficient processing capacity, is the ideal choice for batch products processing.
- Automatic tool changer, can realize automatic interchange of multi-size tools, improves production efficiency
- Excellent man-machine interface, easy operation
- Nice machine appearance, small footprint.

■ For Material

glass, composite material, acrylic, stainless steel, aluminum, etc

■ Applied Range

machining of edge grinding, hole making, pocket making, chamfering, drilling, etc in the industries of phone, table computer, intelligent wearing, intelligent house hold appliance and photo electricity, etc



KEJIE website



KEJIE wechat

Parameters

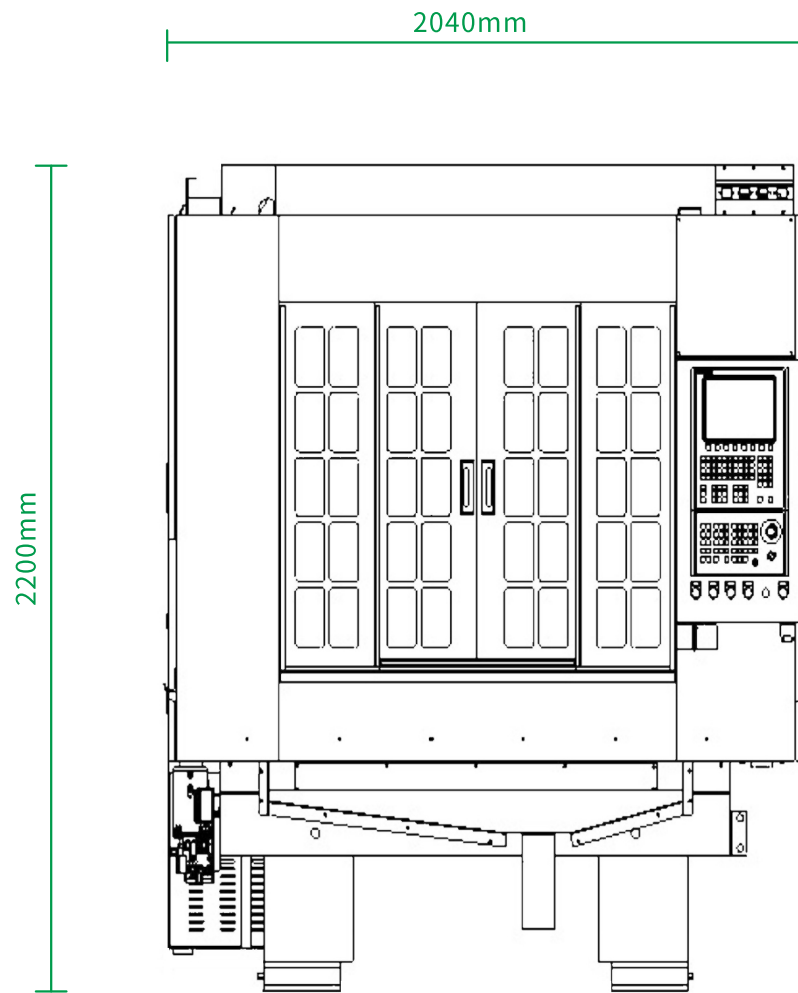
Item	Parameter
X/Y/Z travel	400/400/150mm
Work table dimension	400x400mm
Max load of worktable	100kg
Spindle power/Max spindle speed	4.5kW*2/40000rpm
Spindle interface/taper	ISO20
Rapid traverse rate	15m/min
Cutting feed rate	10m/min
Positioning accuracy	0.008mm/300mm
Repeatability	0.005mm
Machine net weight	4000kg
Machine net dimension	2040x2220x2120mm
Power supply	3-PH AC380V ±10% (50Hz)

Standard Configuration

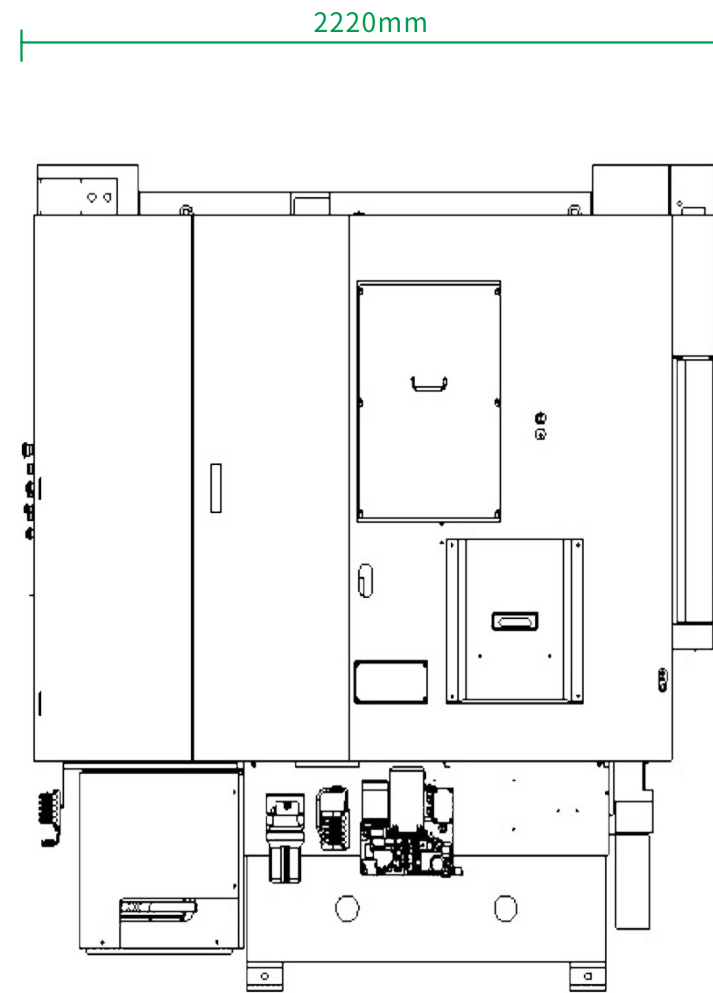
- JIATIE High speed CNC controller
- High speed spindle(double Z-axis)
- AC servo motor
- Precision ball screw and guide rail
- Hand Wheel
- Spindle cooling system
- Double tool magazine

Optional Accessories

- Oil mist collector
- Voltage stabilizer
- Probe
- 4.5th axis



Front



Left