

JTBM-600 CNC Grinding Center

Product descriptions and features

■ Features

- Superior processing capabilities

- Excellent dynamic machining performance
- High-precision, high-speed, and high-efficiency, ideal for batch production of parts
- Automatic tool magazine, which can realize automatic exchange of multi-size tools and improve production efficiency

-JIATIE CNC controller is easy to operate

- The self-developed high-speed CNC controller is easy to operate and has stronger compatibility and openness
- Favorable man-machine interaction, easy operation

The 4th axis function can be optional to realizes multi-face machining in one-time clamping

■ For Material

glass, ceramic, sapphire, silicon carbide, silicon nitride and etc, titanium, engineering plastics

■ Applied Range

Machining for industry applications of aviation and aerospace, medicaproduct, semi-conductor, etc



科杰技术网站



科杰技术公众号



Parameters

Item	Parameter
X/Y/Z travel	500/600/250mm
Work table dimension	500×650mm
Max load of worktable	300kg
Spindle power/Max spindle speed	7.2kW/24000rpm
Spindle interface/taper	BBT30
Rapid traverse rate	15m/min
Cutting feed rate	10m/min
Positioning accuracy	0.008mm/300mm
Repeatability	0.005mm
Machine net weight	4000kg
Machine net dimension	1750×2070×2500mm
Power supply	3-PH AC380V ±10% (50Hz)

Standard Accessories

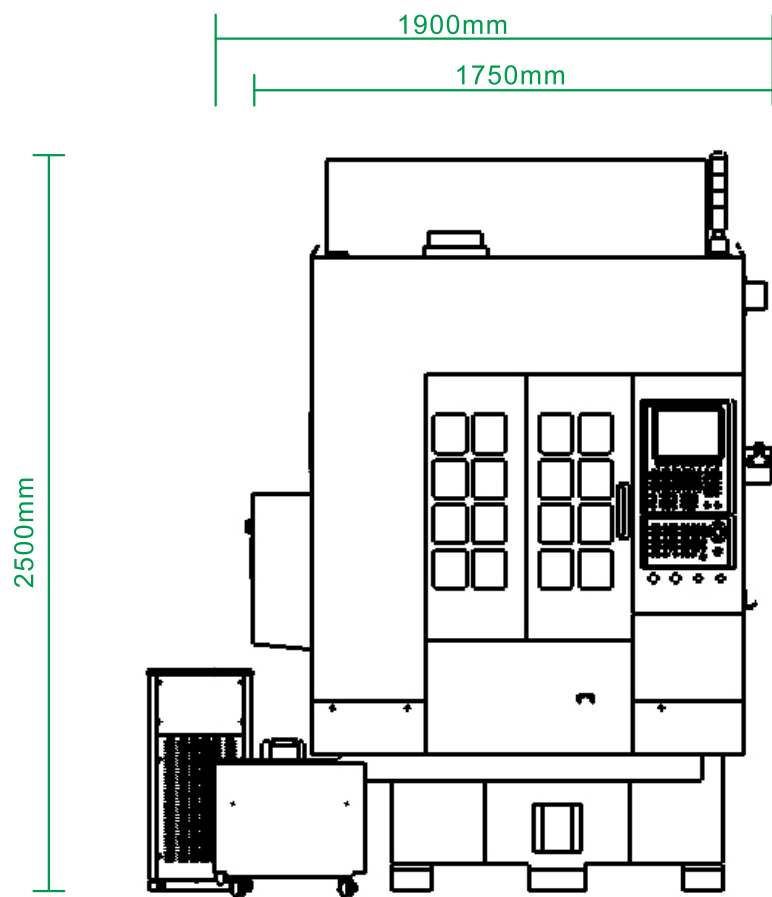
- High-speed CNC system
- High-speed motorized spindle
- AC servo motor
- Precision ball screw and guide rail
- Automatic tool setter
- Hand Wheel
- Spindle cooling system

Optional Accessories

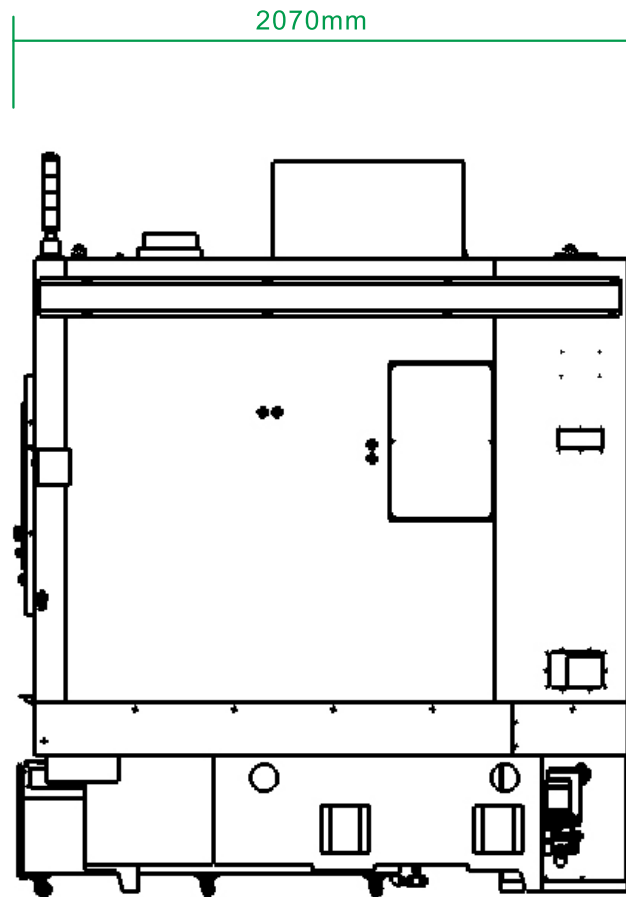
- 4-axis rotary table
- Oil mist collector
- Voltage stabilizer
- Automatic probe

Machine dimension

www.kejiegroup.com



Front



Left